



# MONTHLY MEMBERSHIP PROGRESS REPORT

District 3 K

Results as of: 3/31/2016

GMT: HAL GRIFFIN

LOCATION OKLAHOMA

GMT CA 1

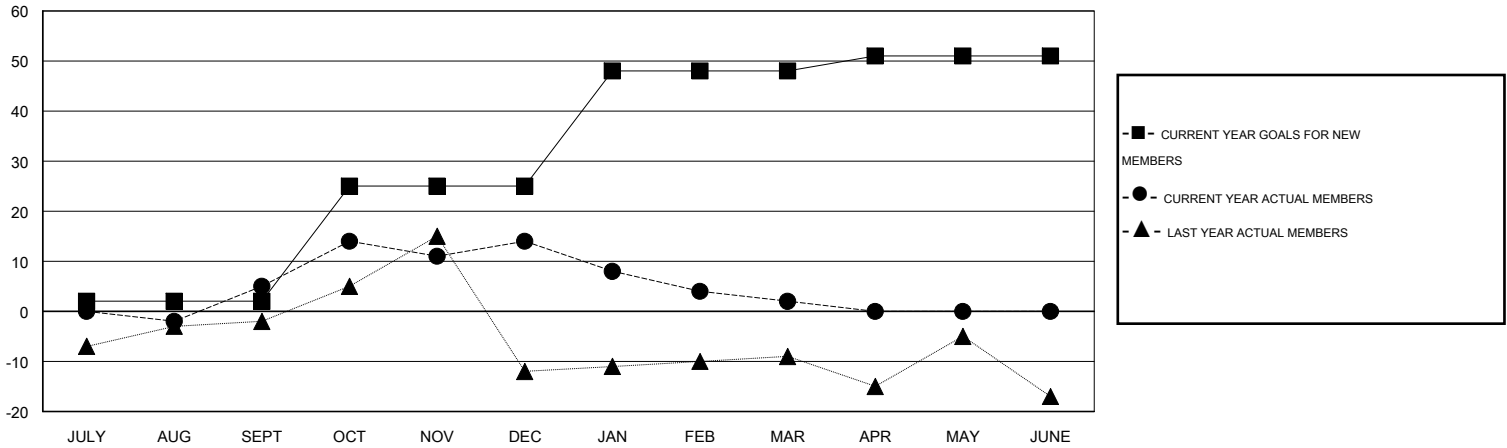
Clubs				
RESULTS FOR 2015-2016				
QUARTER	NEW CLUB GOAL	NEW CLUBS	DROPPED CLUBS	NET GAIN/LOSS
JULY/AUG/SEPT	0	0	0	0
OCT/NOV/DEC	1	0	0	0
JAN/FEB/MAR	1	0	0	0
APR/MAY/JUNE	0	0	0	0

Members				
RESULTS FOR 2015-2016				
QUARTER	NEW MEMBER GOAL	CHARTER AND NEW MEMBERS ADDED	DROPPED MEMBERS	NET GAIN/LOSS
JULY/AUG/SEPT	2	24	19	5
OCT/NOV/DEC	23	29	20	9
JAN/FEB/MAR	23	12	24	-12
APR/MAY/JUNE	3	0	0	0

GOALS AND ACTUAL NEW CLUBS CUMULATIVE



GOALS AND ACTUAL MEMBERS CUMULATIVE



DROPPED CLUBS: 0
------------------

23 CLUBS OF 35 ADDED 1 OR MORE NEW MEMBERS

GENDER DISTRIBUTION	
MALE	660 (69.84%)
FEMALE	285 (30.16%)

DROPPED MEMBERS	
DECEASED	5
CLUB CANCELLED	0
OTHER	58
<b>TOTAL</b>	<b>63</b>

[CLICK HERE FOR HEALTH ASSESSMENT DATA](#)

FAMILY UNIT MEMBERS	88
HEAD OF HOUSEHOLD	44
NON-HEAD OF HOUSEHOLD	44